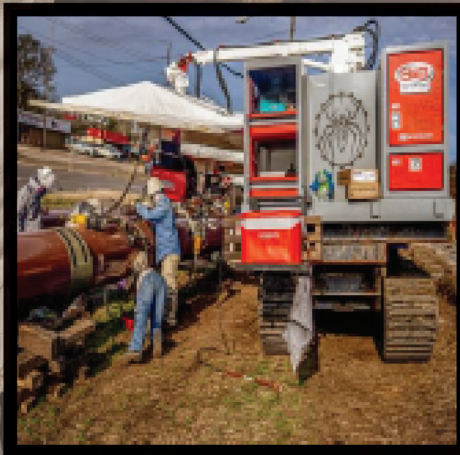




B&BTM

**MECHANIZED
SOLUTIONS**

A **PSS** **INDUSTRIAL GROUP** COMPANY



PRODUCT SPECIFICATIONS

Product Name	Product Number	Input Power	Input Current	Travel Speed 1pm(mm)	Clearance-in (mm)		Oscillation Stroke in. (mm)	Motorized Height Control Stroke in (mm)	Lead Lag	Torch Tilt		H x W x D in (mm)	LBS
					Radial	Axial				In	Out		
HELIX® M85 Weld Head	K52101-1	24V DC	9A Max	0.1 min 120 max (2.54 min 3048 max)	8.5 (215.9)	19.75 (501.7)	2.00 (50.8)	2.00 (50.8)	360°	60° max	30° max	7ft wide x 8ft high x 11ft long 8.33 x 14.25 x 6.85 (211.6 x 362.0 x 174.0)	7500

RECOMMENDED ACCESSORIES

DESCRIPTION	Product Number
HELIX M85 WELD HEAD AND ACCESSORIES	
HELIX Control Cable, 15 ft. (4.6 m)	K52107-15
HELIX Control Cable, 25 ft. (7.6 m)	K52107-25
HELIX Control Cable, 50 ft. (15.2 m)	K52107-50



HELIX M85 Weld Head shown with: K52106-15 Torch

HELIX M85 TORCHES

Magnum PRO 550 Mechanized 10 in barrel (254 mm) 15 ft (4.6 m) cable length	GMAW	K52153-15
--	-------------	-----------



HELIX M85 Weld Head shown with: K52230-1 Wire Feeder and K52223-25 Torch

HELIX M85 ONBOARD WIRE FEEDERS & WIRE MANIPULATOR KITS

HELIX SF70A-1 M85 Onboard Wire Feeder	GMAW	K52230-1
HELIX SF70A-2 M85 Onboard Wire Feeder	GMAW	K52230-2

HELIX M85 WELD HEAD

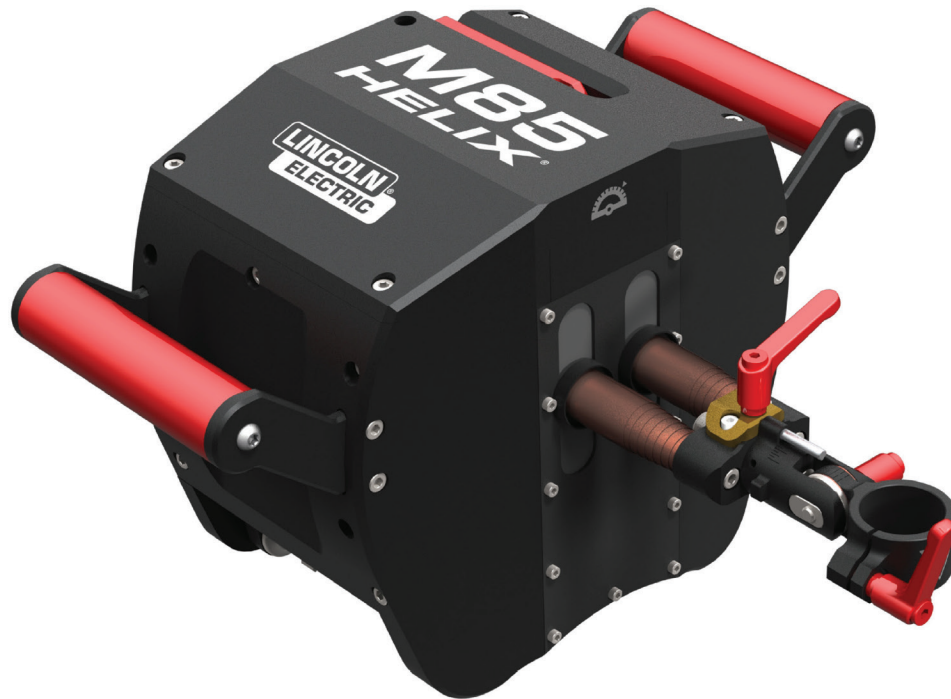
THE BENCHMARK FOR MULTI-PROCESS MECHANIZED WELDING

KEY FEATURES

The HELIX® M85 is the first next-generation orbital welding head. It incorporates digital capabilities in an intuitive ergonomic design, bringing the hyphenate: best-in-class for all of your orbital and plate welding needs from GMAW and FCAW.

The HELIX M85 weld head removes the steep learning curve that is required with most other orbital equipment due to its clean design. All of the motors and harnesses are packaged inside the weld head, reducing visual confusion when working in the shop and providing protection from harsh environments when out in the field. The red color coding makes it easy for new operators to identify where adjustments to the weld head can be made.





With a light weight, compact and durable design, the M85 weld head's low axial clearance enables welding close to flanges and other obstructions near the joint. An inclinometer is included in its mechanics and major upgrades can be accomplished with limited technical capability due to the digital nature of the weld head. To add onboard wire-feeding capability, only a simple Allen wrench is required. Everything else just plugs in line with the common control cable.

The mechanized APEX® 3 Series welding system sets up quickly and delivers precision calculation and control of travel time, weld distance, weld speed and other essential variables. The HELIX M85 weld head, a central component of this system, provides consistent, high quality results with little or no time wasted on setup or rework.

THE POWER YOU NEED



FOR THE WORK AT HAND

Our system is **unique** to the pipeline industry because it offers a solution to those jobs that require low hydrogen, gas-less.

The Bug & Band process allows a contractor to operate with less equipment at a faster pace.

B&B Mechanized Advantage:

No shielding gas required

No welding shacks required

Low hydrogen welding

Demonstrated low repair rate (<4%)

Low learning curve

Mechanized

Lightweight skids deployable on small, rubber tracked marukas or flatbed truck
(F450 or comparable)

Quickly deployable

Nimble for tight right of way areas

Ideal jobs for the B&B Mechanized welding solution:

Low hydrogen welding

Pipe size >16" diameter and wall thickness >3/8"

Horizontal directional drilling

Pipe stopples

Integrity work



RUBBER TRACKED VEHICLE



LEGACY 1



A **PSS** **INDUSTRIAL GROUP** **COMPANY**

 10507 ELLA BLVD #100, HOUSTON, TX 77038

 (844) 252-0118

 www.pssigroup.com

 SALES@PSSIGROUP.COM